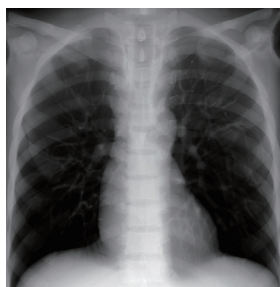


PH-2 | 41350-000

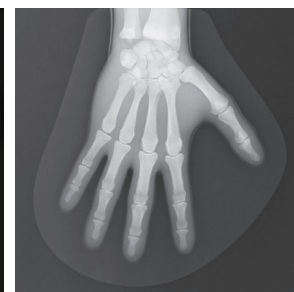
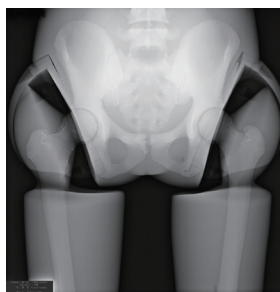
# Whole Body Phantom "PBU-50"



An essential asset for every radiography program



SHOW MORE!



## FEATURES

- | Radiology absorption and HU number approximate to human body.
- | Main joints have close-to human articulation
- | Phantom can be disassembled into 10 individual parts

## APPLICATIONS

- | Plain X-ray
- | Basic patient positioning
- | Basic CT

## ANATOMY

skull / spine / clavicles / scapulae / ribs / sternum / coxal bones / lungs with pulmonary vessels / trachea (up to primary bronchi) / heart / liver with portal and hepatic veins / kidneys / humerus / antebrachial bone / bones of hand / femur / patella / lower leg bone / bones of foot

## DESCRIPTIONS

### SET INCLUDES

- 1 whole body phantom
- 1 head supporter
- 1 flat head screwdriver
- 1 set of sample X-ray data (DVD) manual

### SPECIFICATIONS

Phantom height: 165 cm  
65 in

Phantom weight: 50 kg / 110 lb

Packing size:  
W92 x D57 x H38 cm/W36 x D22 x H15 in  
W90 x D63 x H22 cm/W35 x D25 x H8.7 in  
W89 x D57 x H16 cm/W35 x D22 x H6.3 in

Packing weight:  
80 kg / 176 lb

### MATERIALS

Soft tissue: urethane based resin (density: 1.06)  
Synthetic bone: epoxy resin (density: 1.31)  
Skull: epoxy resin (density: 1.11)  
\*Phantom has no metal parts or liquid structure

### OPTIONAL PARTS

- 41363-070 storage cases (consist of 2 boxes)
- 41350-200-16 body plates for PH-2/2B (BMI 32)
- 41350-200-17 body plates for PH-2/2B (BMI 40)

Storage case P.12 ▶