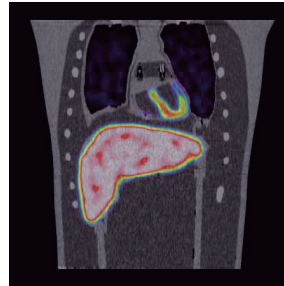
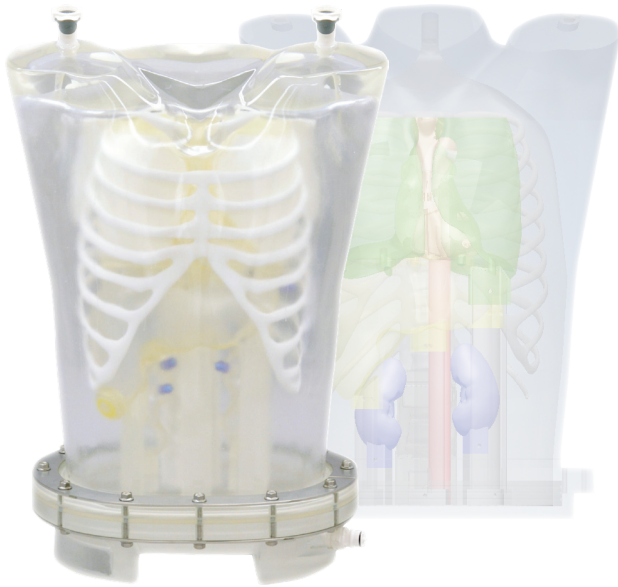


PH-63 | 41927-000

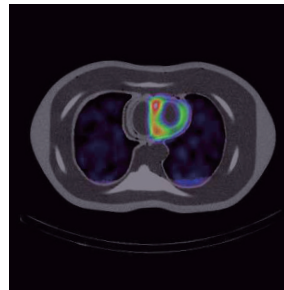
PET/SPECT Thorax Phantom



PET/ SPECT Thorax Phantom is an optimal tool for study in nuclear medicine



SHOW MORE!



FEATURES

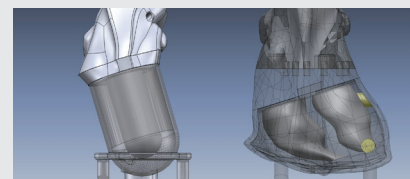
- Examination of myocardial density through SPECT imaging**
 - | Verification of myocardial imaging with the use of various RI solution densities
 - | Ability to capture defects of the myocardial region
 - | Can reproduce image variations of the heart by injecting RI solutions in the liver, kidney and lungs
- Examination of RI solution density for simulated tumors**
 - | The simulated tumors can be inserted into lung, liver and breast
 - | Tumors can be filled with FDG/RI solution into the spheres for evaluation of density, size and placement

APPLICATIONS

- | PET/SPECT
- | Quality management of NM equipment
- | Myocardial density with SPECT imaging
- | RI solution density for tumor imaging

ANATOMY

- | | |
|---|---------------------------------|
| Liver | Heart |
| Lung (right/left) | - Anatomical type: |
| Kidney (right/left) | right ventricle, left ventricle |
| Hot spots (liver, lungs and breast) | and myocardium |
| * Hot spot for PET can be set in liver, lungs and breast. | - Geometric type: |
| | left ventricle and myocardium |



Geometric type Anatomical type

- HU** | Bone: 370HU
 | Lung: -900HU
 | Organ shell material: 100HU, and 1.16g/cm³ in density

DESCRIPTIONS

SET INCLUDES

1 thorax body	1 base	*S: Several
2 lungs (left and right)	S* plastic pins	
4 hearts	6 supporting bars	
1 liver	4 flat bar rings for base	
2 kidneys	5 tubes	
1 rib cage and spine	1 syringe	
2 breasts	S* nuts and bolts	
3 hot spots	1 water tank	
	manual	

MATERIALS

Soft tissue: transparent polyurethane
 Lungs: materials with density 0.4 g/cm³
 Bone materials: Calcium infused material to provide proper attenuation with use of RI solutions

SPECIFICATIONS

Phantom size:	Phantom weight:
W44 x H69.4 cm	phantom itself: 21 kg / 46.2 lb
W17.3 x H27.3 in	when filled with liquid: 37.5 kg / 82.6 lb