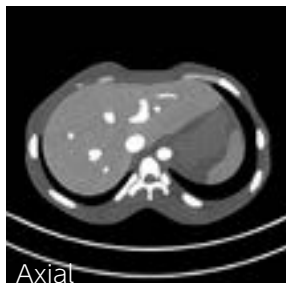


PH-5 | 41360-000 for CT / 41360-100 for MECT

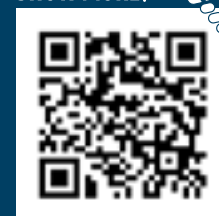


CT Abdomen Phantom

The phantom facilitates study of image fusion between CT and ultrasound in combination with US-1 Echozy*.
New variation for MECT has been added



SHOW MORE!



FEATURES

- Two variation to meet your requirements:
- CT type (no contrast enhancement),
- MECT type (vessels with 13mgI/ml** iodine and the liver of multi-energy CT compatible material)

APPLICATIONS

- CT
- Multi energy CT

**Concentration of iodine can be custom-ordered.

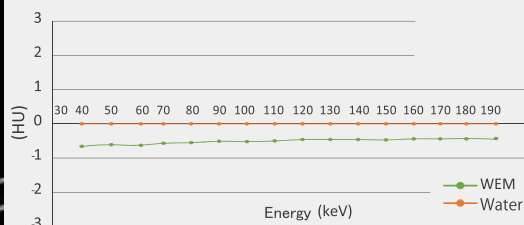
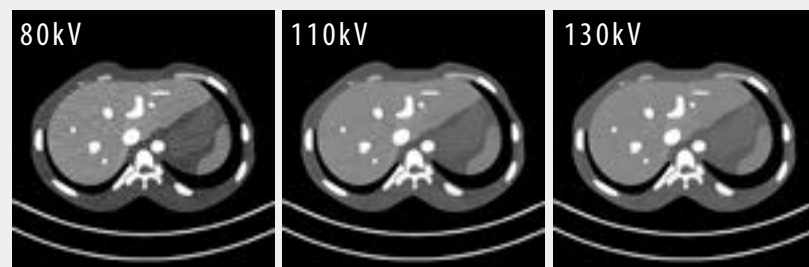
ANATOMY

- | | | |
|-------------------------------|----------------|---------------|
| lungs (no internal structure) | hepatic vein | aorta |
| heart (no internal structure) | hepatic artery | IVC |
| liver | kidneys | spinal column |
| portal vein | pancreas | ribs |
| gallbladder | spleen | |

*Vessels and organs with a contrast agent can be included as a special order.

IMAGES of Multi-Energy CT

Liver and contrast enhanced vessels are of multi-energy compatible water equivalent material (WEM).->see P 28 for more information.
The below right graph shows WEM's high water-equivalency through wide energy range



DESCRIPTIONS

SET INCLUDES

- 1 abdomen phantom
- 1 set of sample X-ray data (DVD)
- 1 storage case manual

MATERIALS

Soft tissue: urethane based resin (density: 1.06)
Synthetic bone: epoxy resin (density: 1.31)

SPECIFICATIONS

Phantom size: W27 x D16 x H28 cm W10.6 x D16 x H11.8 in	Phantom weight: 12 kg / 26.4 lb	Packing size: W44 x D39 x H42 cm W17.3 x D15.3 x H16.5 in	Packing weight: 19 kg / 42 lb
---	------------------------------------	---	----------------------------------