

Caution:

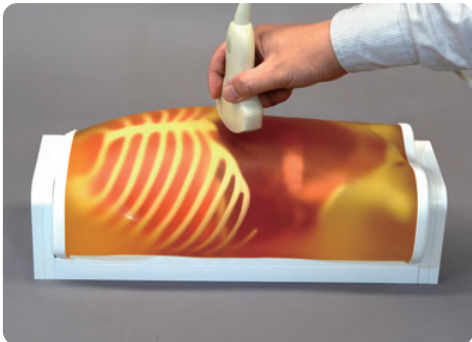
Don't mark on the phantom with pen or leave printed materials contacted on its surface.
Ink marks on the phantom will be irremovable.

US-8

Pediatric FAST/Acute Abdomen Phantom

取扱説明書

Instruction
Manual



Contents

- Please read before training
 - General information P. 2
- Preparation
 - Before training P. 2
- Training
 - Training session P. 2
 - After training P. 2

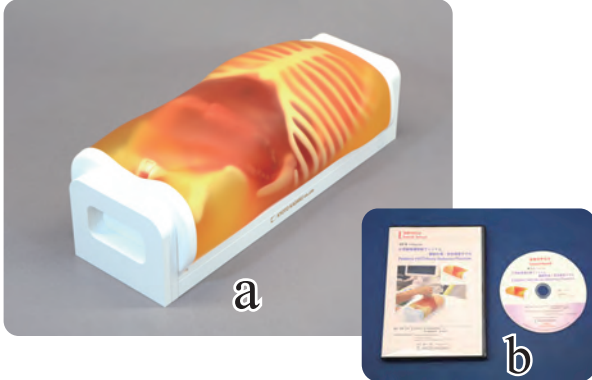
This product is intended to be used for medical training. Do not use for other than the intended purpose.

Please read Preparation/ Training

General information Training session

Set includes:

Before your first use, please ensure that you have all components listed below.



- a. Pediatric FAST/Acute Abdomen Phantom 1
- Carring Case 1
- b. DVD Tutorial Manual 1
- Instruction manual (this leaflet) 1

Please note: The color of the phantom may change over time, though, please be assured that this is not deterioration of the material and the ultrasonic features of the phantom stay unaffected.

This phantom has a thin layer of coating for protective purposes which may cause minor wrinkling. However, it has no effect on the ultrasound image.

⚠ DOs and DON'T s

DO s

Handle with care

The materials for phantom and models are special composition of soft resin. Please handle with care at all times.

Cleaning and care

Clean the phantom completely every time after the training.

The remaining gel may deteriorate the phantom. Keep the phantom at room temperature, away from heat, moisture and direct sunlight.

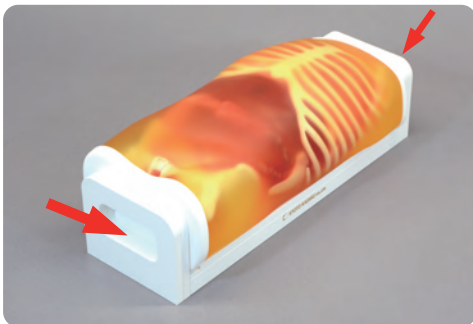
DON'Ts

Never wipe the phantom or models with thinner or organic solvent.

Don't mark on the phantom with pen or leave printed materials contacted on their surface.

Ink marks on the models will be irremovable.

1 Before training

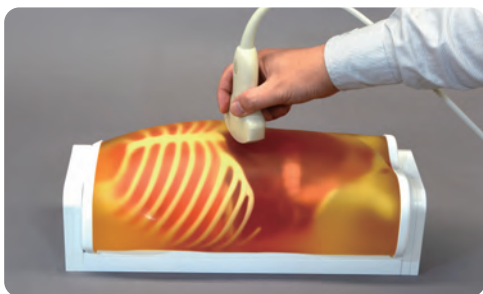


① Move the phantom, be sure to grip both handles at the base.



② Spread ultrasound gel over the phantom body.

2 Training session



The phantom can be scanned with actual ultrasound devices.
* The map of simulated hemorrhages and tumors is on the backside of this manual.

3 After training



Wipe the remaining gel completely by wet cloth. If remaining gel gets dried up on the body, it may cause scratches and tears on the phantom material.



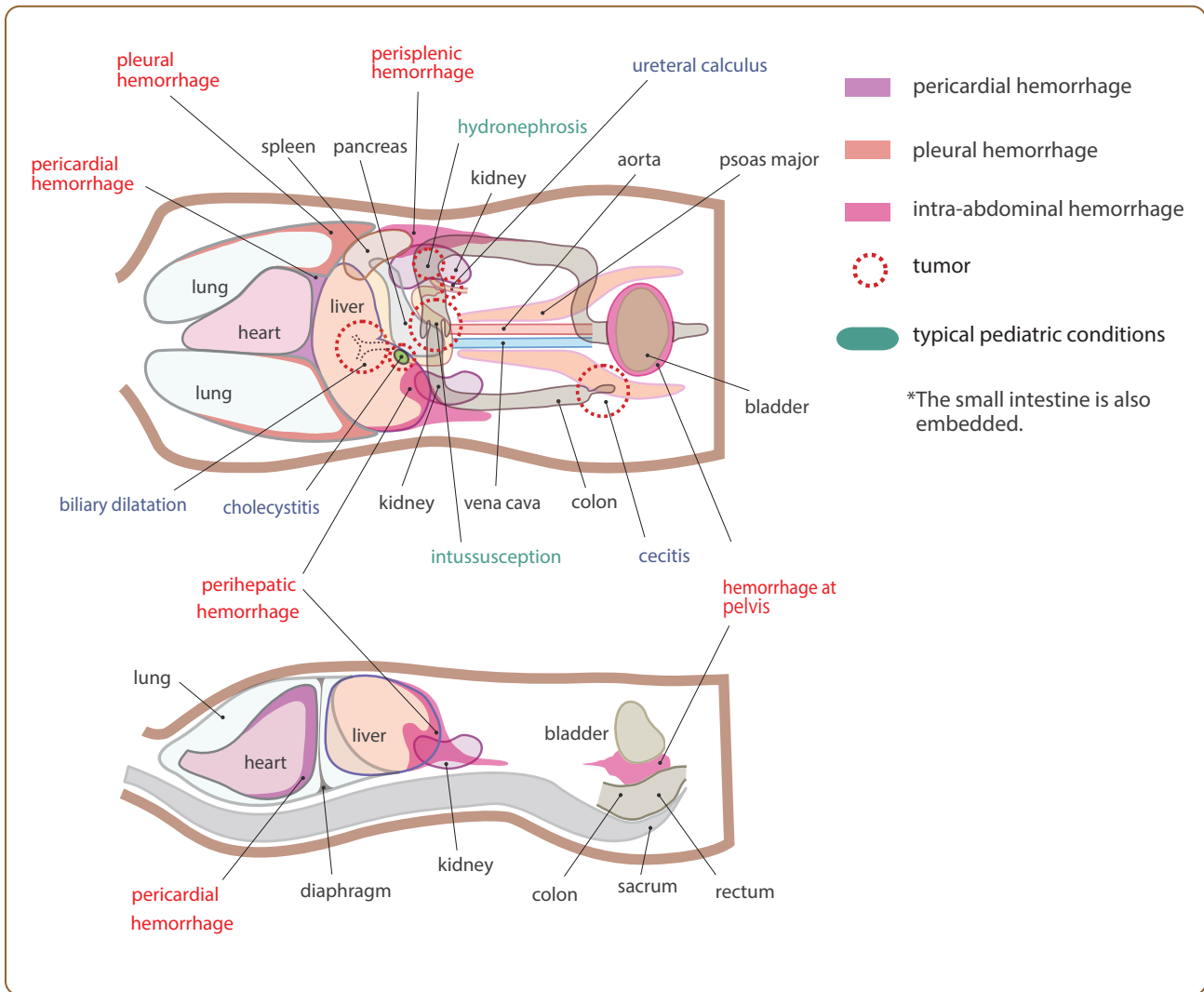
注意

ファントムに取扱説明書や印刷物などが直接触れないようにしてください。
樹脂表面にインクが吸収され消えなくなります。



Caution

Don't mark on the phantom with pen or leave printed materials contacted on its surface.
Ink marks on the phantom will be irremovable.



The contents of this manual are subject to change without prior notice.

No part of this instruction manual may be reproduced or transmitted in any form without permission from the manufacturer. Please contact manufacturer for extra copies of this manual which may contain important updates and revisions.

Please contact manufacturer with any discrepancies, typos, or mistakes in this manual or product feedback. Your cooperation is greatly appreciated.

 **KYOTO KAGAKU co.,LTD**

URL : <http://www.kyotokagaku.com>
e-mail : rw-kyoto@kyotokagaku.co.jp

■ **本社・工場**

〒612-8388 京都市伏見区北寝小屋町15番地
TEL:075-605-2510(直通) FAX:075-605-2519

■ **Main Office and Factory**

15 Kitanechoya-cho Fushimi-ku Kyoto 612-8388, Japan
Telephone : 81-75-605-2510
Facsimile : 81-75-605-2519

■ **東京支店**

〒113-0033 東京都文京区本郷三丁目26番6号
NREG本郷三丁目ビル2階
TEL:03-3817-8071(直通) FAX:03-3817-8075

■ **KyotoKagaku America Inc.**

USA,Canada,and South America
3109 Lomita Boulevard, Torrance, CA 90505,USA
Telephone : 1-310-325-8860
Facsimile : 1-310-325-8867