

### Pressure Sores Simulator

MW63	11446-000	Full Set
	11446-100	Basic Set

**Set includes**

	11446-000	11446-100
Lower body torso	<input type="checkbox"/>	<input type="checkbox"/>
Sacral pressure sore pad		
Stage II		
Stage III	<input type="checkbox"/>	<input type="checkbox"/>
Stage IV (with granulation)		
Stage IV (with pockets)		
Sciatic pressure sore pad stage IV	<input type="checkbox"/>	<input type="checkbox"/>
Two types of echo pads	<input type="checkbox"/>	-
Necrotic tissue removal set	<input type="checkbox"/>	-
Consumables set (simulated pus, blood, exudate and necrotic tissue)	<input type="checkbox"/>	<input type="checkbox"/>
Storage case	<input type="checkbox"/>	<input type="checkbox"/>
Instruction manual	<input type="checkbox"/>	<input type="checkbox"/>



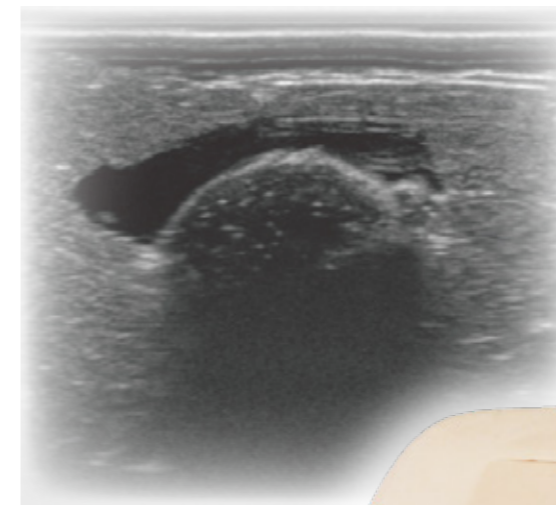
11446-000



11446-100

- Main body
- Main body : Adult lower body torso
- Size : W44×D40×H38
- Material : Soft resin, Latex free
- Weight : 3.8kg

# MW63 Pressure Sores Simulator



**Consumables set**

- simulated pus
- simulated exudate
- simulated blood
- simulated necrotic tissue

**Necrotic tissue removal set**

- Base for necrotic tissue removal
- Pads for necrotic tissue removal
- Two types of echo pads (normal / edema)

## KYOTO KAGAKU co.,LTD

WORLDWIDE INQUIRIES & ORDERING  
KYOTOKAGAKU HEAD OFFICE & FACTORIES

15 Kitanechoya-cho, Fushimi-ku, Kyoto 612-8388, JAPAN

+81-75-605-2510 +81-75-605-2519

<http://www.kyotokagaku.com>

[rw-kyoto@kyotokagaku.co.jp](mailto:rw-kyoto@kyotokagaku.co.jp)

## All American regions KYOTOKAGAKU AMERICA INC.

3109 Lomita Boulevard, Torrance, CA 90505-5108, USA

+1-310-325-8860 +1-310-325-8867

<http://www.kkamerica-inc.com/>

[info@kkamerica-inc.com](mailto:info@kkamerica-inc.com)

**POINT 1** Assessment of Pressure Sores

**A. Sacral pressure sore**

This simulator includes a set of sacral pressure sore pads with different stages (4 types)

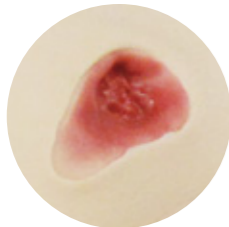


Partial-thickness loss of dermis    Full-thickness skin loss



Full-thickness skin loss with granulation    Full thickness tissue loss with exposed bone

**B. Greater trochanter pressure sore**

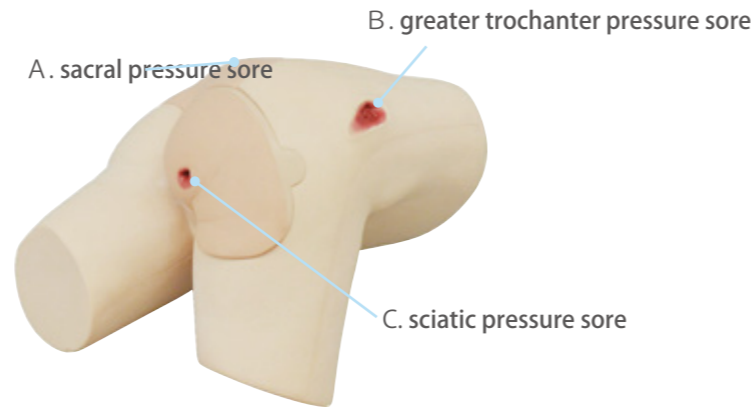


Full-thickness skin loss

**C. Sciatic pressure sore**



Full thickness tissue loss with exposed bone



In accordance with the DESIGN-R 2020, all seven items can be trained using a combination of different pads and simulated liquid.

- | **D**epth
- | **E**xudate
- | **S**ize
- | **I**nflammation / **I**nfection
- | **G**ranulation
- | **N**ecrotic tissue
- | **P**ocket

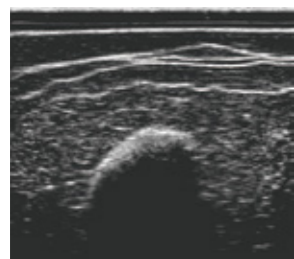
\*Japanese Society of Pressure Ulcers

**POINT 2** Assessment of deep tissue by ultrasound

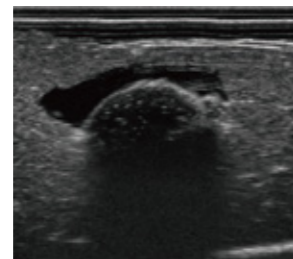
Sciatic pressure sore:

Ultrasound assessment of deep tissue injury

Two types are included : normal and edema



normal



edema



**POINT 3** Prevention and treatment of pressure ulcers / Cleansing /Dressing



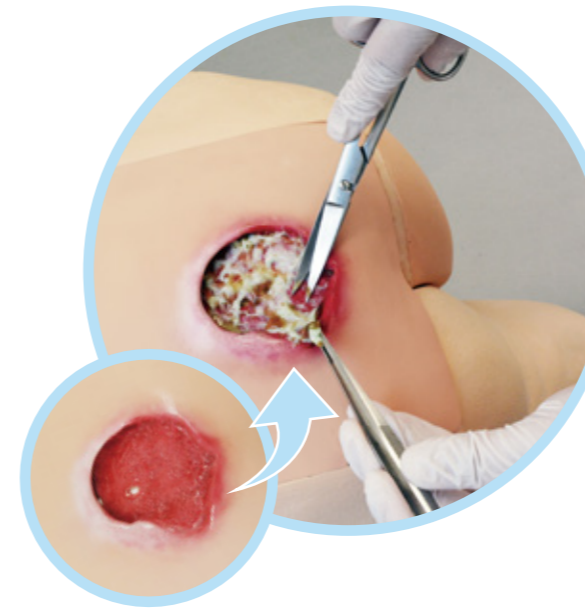
cleansing



applying dressings

Cleansing, applying dressings or topical medications and procedures of Negative Pressure Wound Therapy (NPWT)

**POINT 4** Realistic reproduction of human tissue allows for accurate training environment



Simulated exudate, and necrotic tissue set are included. Excellent quality of appearance and texture.

**Necrotic Tissue Removal set**  
Unique Feature  
"Three-layer structure"



**Product Supervision** MD. PhD, Professor Hiroto Terashi, Plastic and Reconstructive Surgery, Kobe University School of Medicine  
Masaharu Sugimoto, Part-time Lecturer, Toyama University of Rehabilitation Medicine and Welfare Madoka  
Noguchi, Nursing Department, Kobe University Hospital

- SKILLS**
- | Assessment of pressure sore using DESIGN-R® 2020
  - | Palpation of the wound
  - | Ultrasound assessment of deep tissue injury (edema in the sciatic area)
  - | Wound cleansing care
  - | Applying dressings
  - | Applying topical medications
  - | Negative pressure wound therapy
  - | Debridement of necrotic tissue
  - | Prevention of pressure sore