

Lung Ultrasound Training Phantom ECHOLUNG

Simple, durable and effective tool to learn the basics of lung ultrasound.

Product Supervision

Hirosaki University
School of Medicine & Hospital Department
of General Medicine Tadashi Kobayashi



FEATURES

- 1 | Four kinds of units: A-LINE, B-LINE(few), B-LINE (many), pneumonia and pleural effusion to learn the basics of lung ultrasound.
- 2 | Anatomy includes: lung, chest wall, ribs
- 3 | No special storage needed
- 4 | Suitable for training in large groups

SKILLS

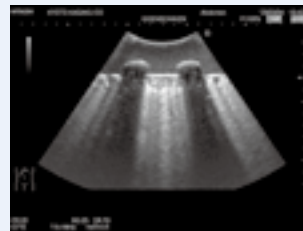
- | Handling and manipulation of probe on lung ultrasound.
- | Scanning the lungs to evaluate pneumonia findings.



A-LINE



B-LINE



B-LINE(many)



Pneumonia and pleural effusion

DESCRIPTIONS

SPECIFICATIONS

Size:Body:32×25×12.5cm/13×10×4.9 inch
Module:14.8×11.8×11cm/5.8×4.6×4.3 inch

Weight:Body:1.9kg
A-LINE/B-LINE/B-LINE (many) : 0.9kg
Pneumonia and pleural effusion : 1.4kg

SET INCLUDES

- 1 | Main Body
- 4 | Kinds of lung modules
- 1 | Instruction manual
- 1 | Talcum powder
- 1 | Storage case