

ENGINEERED FOR BETTER PROTECTION AND A LIGHTER WEIGHT

The TXR-W design is part of a two-piece protective garment designed to evenly distribute weight between the shoulders and hips, enhancing comfort during extended wear.

Its overlapping design offers double protection over vital areas. As one of our most popular designs, the TXR-W has been re-engineered for a better fit around the arm.

DESIGN MEETS THE REQUIREMENTS OF IEC 61331-3:2014

TXR-W

PROTECTIVE APRON

TXR-W

PROTECTIVE APRON

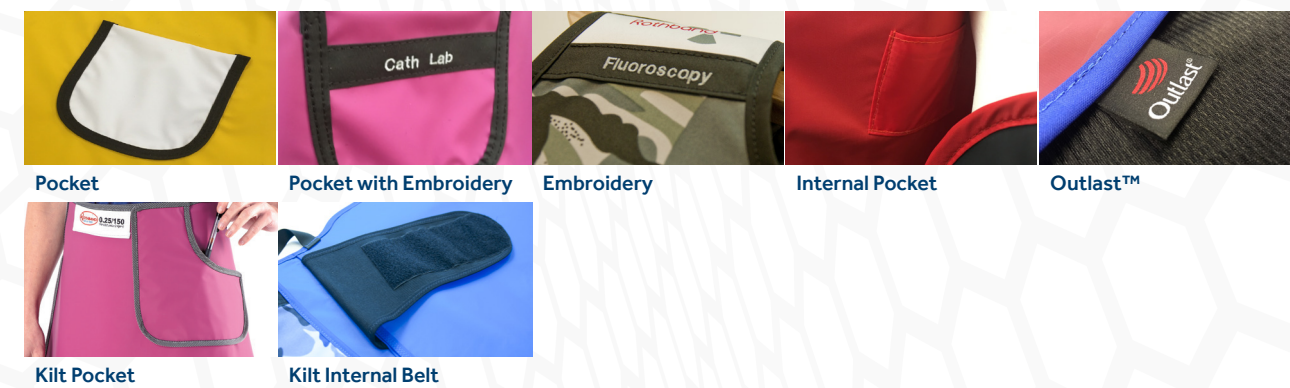
Includes KXR-W Kilt

Sizing

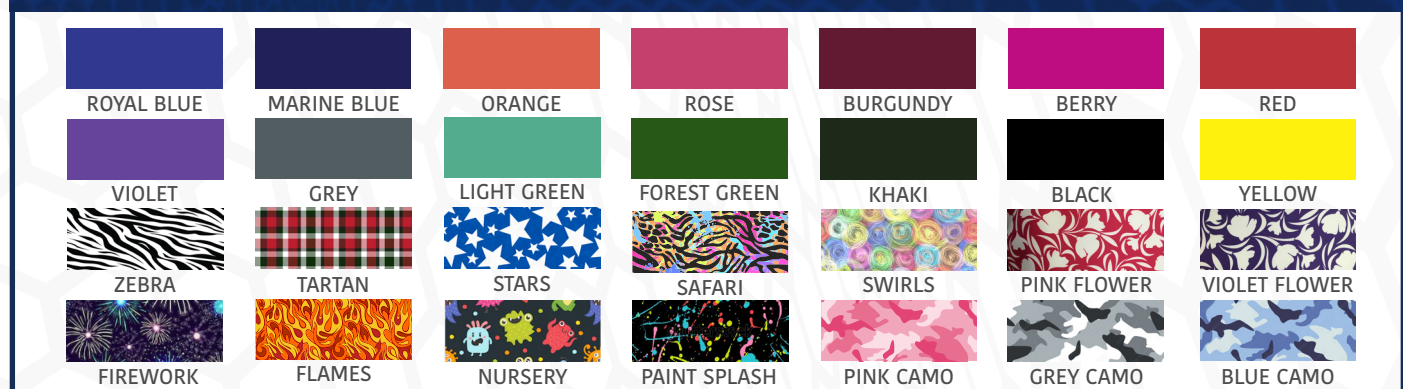
SIZE	XXS	XS	S	M	L	XL	2XL	3XL	4XL	5XL
Chest Measurement	70-80	80-90	90-100	100-110	110-120	120-130	130-140	140-150	150-160	160-170
Waist Measurement	48-57	58-68	68-78	78-88	88-98	98-108	108-118	118-128	128-138	138-148
Hip Measurement	70-80	80-90	90-100	100-110	110-120	120-130	130-140	140-150	150-160	160-170

Options

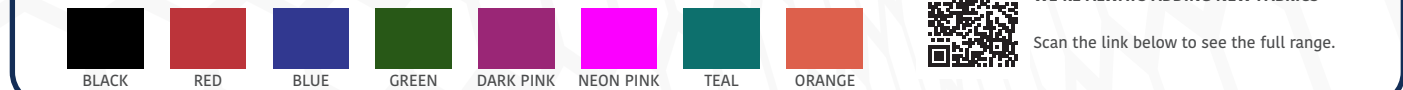
STANDARD LENGTHS (cm)		LEAD EQUIVALENCE		CORE MATERIALS	EXTRAS
TOP	KILT	FRONT	BACK		
50	53	0.5 mm	0.25 mm	LEAD-LT	Pocket
58	58	0.35 mm	0.35 mm	BILAYER-ET	Embroidery
60	60	1.0 mm	0.5 mm	BILAYER-LF	Internal Pocket
65	65				Outlast
70	70				Pocket with Embroidery



Colours



Binding Options



WE'RE ALWAYS ADDING NEW FABRICS
Scan the link below to see the full range.